

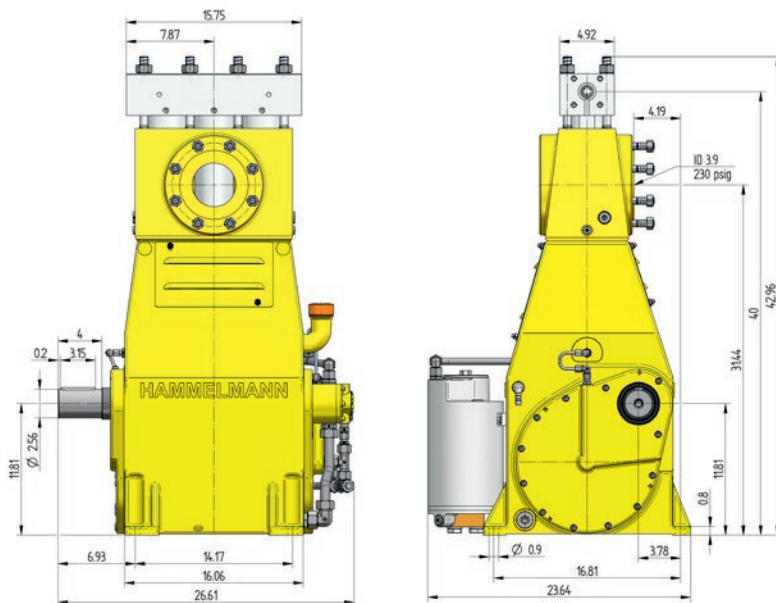
# HAMPRO 200 Process Plunger Pump

**HAMMELMANN®**

Hammelmann process pumps are built to operate at the continuous maximum duty stated in the performance parameters. Just compare the crankshaft speed, average plunger speed, plunger diameter and power rating.

## Process Plunger Pump

Weight: approx. 1.157 lbs

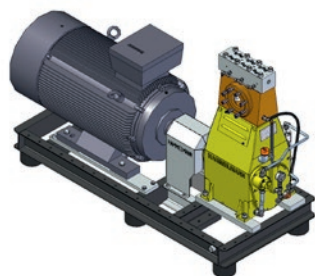


Dimensions: inches



## Stationary unit with electric motor

Length: 80 inch  
 Width: 33 inch  
 Height: 54 inch  
 Weight: approx. 4.409 lbs at 300 HP



Main dimensions without accessories such as suction line, pressure regulator etc. All shown as right side drive. Detailed dimensional drawings and weights available on request.

## Features

- Power ratings up to 300 HP
- Vertical 3 cylinder design

## Zero Emission



In the Zero Emission design the pumped fluid is hermetically sealed within the pump preventing leakage to atmosphere during operation.



The bellow system is gastight.

## Quality and reliability

- Crank section calculation by 'Finite element method' ensures long working life under continuous load
- Stainless steel pump head free of alternating stress
- Integral speed reduction gear
- Pressurised oil lubrication system with oil cooler/filter
- Bellows form hermetic seal between the suction chamber and crank section
- Large selection of materials available for different fluids
- Minimum crankshaft speed with external oil pump 32 r.p.m.

# Technical data. series HAMPRO 200

Performance parameters (Standard design)

HAM PRO	Q** [GPM]	Required power rating [HP]				D [mm]	r.p.m.	
		100	150	200	300		n1	n2
		Operating pressure [psig]						
204	4.8	28283	41336	46413	17.5	1220/1444	*400	
	5.3	27558	41336	46413		1500	416	
	7.4	19580	29008	34084		1800/2150	593	
	6.1	21756	31909	38436	40611	20	1220/1444	*400
	7.4	21031	30458	36260	40611		1500	416
	10.6	14504	21756	25382	40611		1800/2150	593

203	10.3	13779	20306	24657	25	1220/1444	*400
	11.4	13779	19580	23932		1500	416
	16.4	9428	13779	16680		25382	1800/2150
	13.2	10878	15954	19580	28	1220/1444	*400
	14.5	10878	15954	18855		1500	416
	20.6	7252	10878	13054		20306	1800/2150

202	15.3	9428	13779	16680	30	1220/1444	*400
	16.1	9428	13779	16680		1500	416
	23.0	6527	9428	11603		17405	1800/2150
	17.4	8557	12473	14794	32	1220/1444	*400
	18.5	8267	12038	14359		1500	416
	26.4	5802	8412	10153		15229	1800/2150
	21.1	7107	10443	12473	35	1220/1444	*400
	22.2	6817	10008	12038		1500	416
	31.7	4786	7107	8412		12764	1800/2150
	28	5366	7977	9573	40	1220/1444	*400
	29	5221	7687	9283		1500	416
	42	3626	5366	6527		10008	1800/2150
	36	4206	6237	7542	45	1220/1444	*400
	38	4206	6092	7397		1500	416
	53	2901	4351	5221		7832	1800/2150
	44	3481	5076	6092	50	1220/1444	*400
	47	3336	4931	5947		1500	416
	67	2321	3481	4206		6382	1800/2150
	54	2756	4206	5076	55	1220/1444	*400
	57	2756	4061	4931		1500	416
	80	2031	2901	3481		5221	1800/2150
	65	2321	3481	4206	60	1220/1444	*400
	67	2321	3481	4061		1500	416
	95	1595	2466	2901		4351	1800/2150
	76	2031	2901	3626	65	1220/1444	*400
	79	2031	2901	3481		1500	416
	112	1450	2031	2466		3771	1800/2150
89	1740	2611	3046	70	1220/1444	*400	
91	1740	2466	3046		1500	416	
129	1160	1740	2176		3191	1800/2150	593

## Data

- Rod force: 19,783 lbf
- Stroke: 3.0 inch
- Mean plunger speed at n2  
400 r.p.m. = 3.7 ft/sec  
416 r.p.m. = 3.4 ft/sec  
593 r.p.m. = 4.9 ft/sec

## Certificates

- Machine directive 2006/42/EU
- ATEX 94/9/EU
- API 674 (with deviations)
- TA-Luft
- NORSOK M501
- NORSOK M650
- NACE MR0175

## Standards

- DIN EN ISO 9001
- DIN EN ISO 14001
- DIN EN ISO 50001
- BS OHSAS 18001
- ASME-U
- Achilles
- EAC



Hammelmann plunger pumps convert 93 to 98 % of the shaft power to hydraulic energy.

\*\* Data refer to the medium water (compressibility considered)  
\* Speed limit for continuous service according to API 674 – 6.3.1

D = Plunger diameter  
n1 = Motor/Engine r.p.m.  
n2 = Crankshaft r.p.m.

Hammelmann Corporation  
436 Southpointe Drive  
Miamisburg, OH 45342

www.hammelmann.us  
mail@hammelmann.com  
Phone: +1 937-859-8777



Member of  
INTERPUMP GROUP

**HAMMELMANN®**