

Cutting nozzle assemblies

Materials that are difficult to cut require the use of a water jetting nozzle with an abrasive entrainment chamber.

A high pressure water nozzle inside the assembly creates a water jet. This pressurised water jet travels through the entrainment chamber at high speed to a focussing nozzle dragging the air in the chamber with it and creating a vacuum. Abrasive material is fed into the side of the chamber under air pressure. The abrasive particles are sucked into the air around the water jet and accelerated into the water stream to emit from the focussing nozzle.

Type B 1500



Operating pressure: 1500 bar

High pressure connection: Pressure ring / Pressure nut

M 26 x 1,5 for M 14 x 1,5 LH (Nipple)

Flow rate: 10 – 40 l/min

Designed to be mounted on a nozzle carrier.

Application examples:

- Concrete cutting
- Steelwork cutting

Type B 4000



Operating pressure: 4000 bar

High pressure connection: Pressure ring / Pressure nut

M 26 x 1,5 for M 14 x 1,5 LH (Nipple)

Flow rate: 10 – 25 l/min

Designed to be mounted on a nozzle carrier.

Application examples:

- Concrete cutting
- Steelwork cutting

Type S 4000 with collimation tube



Operating pressure: 4000 bar

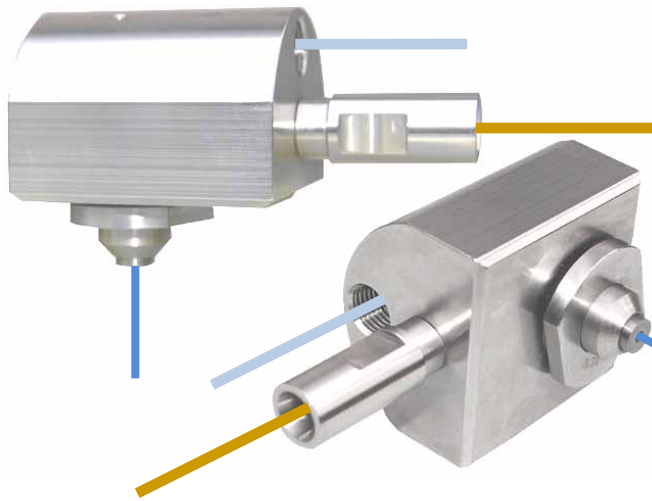
High pressure connection: M 14 x 1,5 LH (Standard)
with adapter to M 26 x 1,5

Flow rate: max. 10 l/min

Application: especially for use with a cutting table, i.e. cutting shapes in metals, glass, plastics, ceramics etc.

The entrainment chamber can be removed without the need for tools for pure water jet cutting of softer materials.

Cutting nozzle assemblies



Operating pressure: 4000 bar

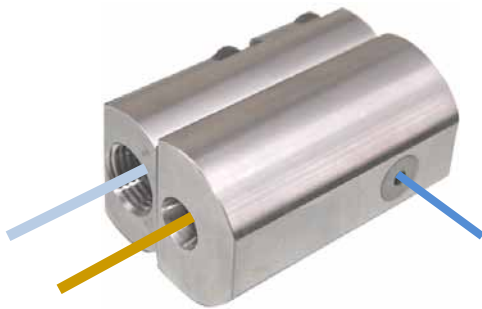
High pressure connection: M 14 x 1,5 LH

M 26 x 1,5 für M 14 x 1,5 LH (Nipple)

Flow rate: 10 – 25 l/min

Application examples:

- Cutting in areas with difficult access, i.e. cutting pipes $\varnothing \geq 65$ mm from inside to out
- Roughening of motor block cylinder bores



Operating pressure: 3000 bar

High pressure connection: M 14 x 1,5 LH

M 26 x 1,5 für M 14 x 1,5 LH (Nipple)

Flow rate: 10 – 25 l/min

Application examples:

- Cutting in areas with difficult access, i.e. cutting pipes $\varnothing \geq 65$ mm from inside to out
- Roughening of motor block cylinder bores

Accessories for cutting nozzles

For
Type B 1500



Nozzle insert Type A

Operating pressure: 1500 bar

Efficiency factor: 0,95

Material: Steel

Orifice diameters: 0,4 – 4,9 mm

For types
B 4000
S 4000



Nozzle insert Type

Operating pressure: 4000 bar

Efficiency factor: 0,72

Material: Steel / Diamond

Orifice diameters: 0,15 – 1,2 mm

For types
B 1500
B 4000
S 4000



Focussing nozzle

Material: Tungsten carbide

Focussing orifice: 0,5; 0,8;

1,0; 1,5; 2,0; 2,5; 3,0 mm

Outside dia.: 9,4 mm

Length: 75 mm

For types
B 1500
B 4000



Guide piece

Fits in front of the focussing nozzle. Suitable for all

Material: Tungsten carbide